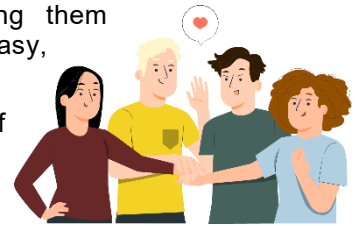


HOW TO RE-ORGANIZE CBLT GROUPS

The Christian life is characterized by growth. Growth is often characterized by decisions or steps into new areas of spiritual development. Spiritual growth is a highly individual matter. CBLT courses help people to grow and change spiritually. Not all people mature at the same rate. So, often after a course, a number of students are not ready to go on to the next course. Occasionally the number of students who want to study further is too small to continue the group in the same format. In such cases it is best to amalgamate a few such very small groups into one larger group. Often students drop out after an initial course or again years later during one of the last courses. In many of such cases the remaining individual students or small groups can be combined into a larger group.

How do you organize new CBLT groups out of several previous groups of students? Let us take as an example the *Basic Christian Life* courses.

1. Quite often if it is in one region, and the groups or villages are not very far apart. You can take some of the best people from two or three *Basic Christian Life* groups, and bring them _____ into one group of *Galatians/Romans*. Now that sounds real easy, and that is one possibility.
2. Another possibility we feel, is that every student, with or without a lot of leadership potential, who has finished all three courses of *Basic Christian Life*, qualifies to study further in the CBLT Center program. That includes *Galatians/Romans* and further. So, in my opinion, if a student has studied for about nine months, done a good job with the *Basic Christian Life* program, then he has some _____ to become a Sunday School teacher or some other leader in the church.
3. Now a third variation is that somebody has finished all three courses, somebody has finished only two courses, or one course of the *Basic Christian Life* program. How do you select students out of three different groups like that and bring them together? I would suggest something like the following:



With the ones that have finished all three courses I would suggest that you begin to study a little bit later. The weather is nice, it is very busy, you are starting some new groups, they are advanced, so, they will just begin later in October.

Then from the other two groups of people, some of them who finished one *Basic Christian Life* course, and some who have finished two courses, I would take just those few _____ people, not the whole group, but just those key people, and I would work with them on two lessons per week. You do that for four or six weeks, and now some of these men are finished with the second course, or with the third course. And that way then, they could all be put together in one new group of *Galatians/Romans*. This has been done in the past and it has worked quite well.

4. Possibly a better option is to finish the additional *Basic Christian Life* lessons which are still not done at the end of the school year, later in the spring and during the early summer.
5. In cases where groups cannot be combined, we recommend individually tutoring the good student who is committed to go on. Individuals do have value before God and often God raises up individuals in isolated situations. Do not ignore the great potential of coaching one individual student through several courses for a year or two. It is a wise investment of your time and well worth doing. Remember you will be raising up a new spiritual leader who will guide the church in a future generation.

So this will give you about 5 possibilities to prepare your *Basic Christian Life* students for the higher level CBLT courses.

Blessings to you, our dear friends!

We are happy to present the video, audio and paper materials that have been prepared by **New Life for Churches**. You have the privilege upon completion of your practical assignment to use this lecture with others.

Practical assignment

Completed

- How many groups need reviving in your area? Make a list ☐
- How many Brothers could benefit extremely if you took the time to do a course with each of them individually for one season? Make a list ☐
- By approaching and coaching them carefully how many of them can you make individually successful so they will become leaders? ☐
- Present your list of “Lost Sheep” – lost, lonely and discouraged dropouts to your CBLT Center director and discuss how you can reach out and minister to them ☐
- Report to Workshop leader next time. ☐

Answer Key

Together; potential; key; individually